

Clamps and Mounting Hardware

Superior Quality, Versatile Applications

Clamps and Mounting Hardware

Our standard clamps are designed for mounting Sinclair antennas to a number of different fixtures including pipes, angle rods, wood poles, braces and flat surfaces. These clamps are also ideal for many other clamping applications. We also offer an extensive range of mounting hardware on special order basis, please contact your Sinclair customer service representative for details.

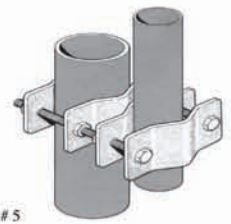
Sinclair Clamps

The table below summarizes a selection of the clamps offered. For further details including corresponding Sinclair antenna models please download our comprehensive clamp selection guide available at: sinctech.com or contact your Sinclair customer service representative at 1-800-263-3275.

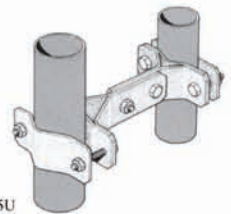
Clamping Pipe to Pipe	Pipe 1 diameter min-max (in)	Pipe 2 diameter min-max (in)
Pipe Parallel to Pipe (fig: clamp-5 and clamp-15)	0.75 - 6.63	0.75 - 6.63
Universal Parallel Clamp Kit (fig: clamp-125U)	1.50 - 3.50	1.50 - 3.60
Pipe 90° to Pipe (fig: clamp-115)	0.75 - 2.88	0.75 - 8.63
Pipe Parallel or 90° to Pipe (fig: clamp-130)	1.50 - 2.88	1.50 - 2.88
Pipe Omni-directional to Pipe	0.75 - 3.50	0.75 - 2.38

Clamping Pipe to Angle Rod	Pipe 1 diameter min-max (in)	Pipe 2 diameter min-max (in)
Pipe Parallel to Angle Rod (fig: clamp-111)	1.50 - 6.63	1.50 - 8.00, (angle 60° & 90°)
Pipe 90° to Angle Rod	1.50 - 3.50	1.50 - 8.00, (angle 60° & 90°)
Pipe Omni-directional to Angle Rod	1.50 - 3.50	4.00 - 8.00, (angle 60°)

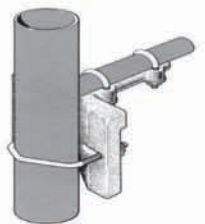
Clamping Pipe to Other Surfaces	Pipe 1 diameter min-max (in)
Pipe Parallel to Wood Pole (fig: clamp-17A)	1.50 - 4.00
Pipe to Brace	1.50 - 2.88
Pipe to Flat Surface	1.88 - 6.63



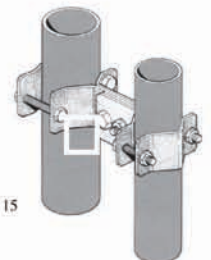
Clamp # 5



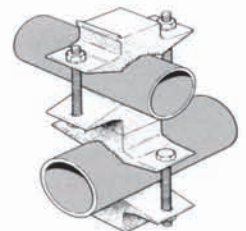
Clamp # 125U



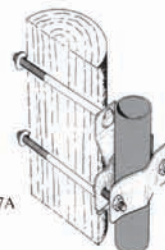
Clamp # 115



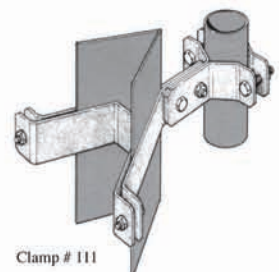
Clamp # 15



Clamp # 130



Clamp # 17A



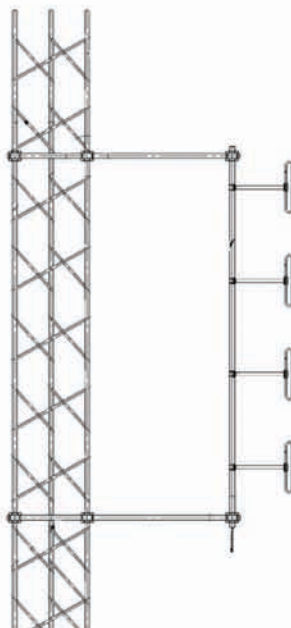
Clamp # 111

Sinclair Side Mount Kits

Sinclair's side-mounting kits offer sturdy support for antennas that can be side mounted in situations where top mounting is not the best option. For corresponding clamps and other details, please download our clamp selection guide via our website at sinctech.com or call us at: 1-800-263-3275.

SMK Model Number	Spacing
SMK-125-A3	(3'-6" max)
SMK-125-A7	(7'-6" max)
SMK-125-A7	(7'-6" max)
SMK-125-A3	(3'-6" max)
SMK-225-A3	(3'-6" max)
SMK-225-A7	(7'-6" max)
SMK-325-A3	(3'-6" max)
SMK-325-A7	(7'-0" max)
SMK-335-A3	(3'-6" max)
SMK-335-A7	(7'-0" max)
SMK-345-A7	(7'-10" max)

SMK-125-A7
 ADJUSTABLE SIDE MOUNTING KIT ASSEMBLY



SMK-325-A3
 ADJUSTABLE SIDE MOUNTING KIT ASSEMBLY



Distributed in the United States by:

Tessco Technologies
 Tel: (800) 508-5444
www.tessco.com

Primus Electronics Corp
 Tel: (800) 435-1636
www.primuselectronics.com

Talley Communications
 Tel: (800) 949-7099
www.talleycom.com

Motorola U.S.A.
 Tel: (800) 422-4210 x 6883
www.motorola.com

Distributed in Canada by:

Mobile Trends
 Tel: (800) 665-2955
www.mobiletrends.ca

Omni Provincial Electronics
 Tel: (877) 291-9633
www.omnipro.ca

Production électronique inc.
 Tel: (877) 359-0523
www.productionelectronique.ca

Waverunner Communications
 Tel: (888) 561-1113
www.waverun.net

Sinclair Technologies
www.sinctech.com

U.S.A.
 Tel: 1(800) 263-3275
 Fax: 1(716) 874-4007

Canada
 Tel: 1(800) 263-3275
 Fax: 1(800) 668-7416

Europe, Middle East and Africa
 Tel: 44(0)1487 84 28 19
 Fax: 44(0)1487 84 28 78

Asia
 Tel: 1(905) 726-7681
 Fax: 1(905) 727-0861

Caribbean and Latin America
 Tel: 1(905) 726-7676
 Fax: 1(905) 727-0861