

## DUPLEXER MODELS

\* R-312C, R-313C, R-314C, R-401C, R-3A11C,  
R-3A12C, R-3A13C, MR-336B, MR-3A08B

CM-221

## DUPLEXER INSTALLATION PROCEDURE

THIS DUPLEXER COMES TO YOU TUNED AND READY TO INSTALL IN THE SYSTEM, NO FIELD TUNING HAS TO BE DONE ON THE DUPLEXER. THE FOLLOWING STEPS SHOULD BE FOLLOWED TO INSURE PROPER INSTALLATION.

1. VERIFY THAT YOUR STATION DUPLEX FREQUENCIES ARE THE SAME AS THOSE TO WHICH THE DUPLEXER IS TUNED. THESE FREQUENCIES ARE ON THE UNIT IDENTIFICATION LABEL.
2. WITHOUT THE DUPLEXER IN THE SYSTEM, TUNE THE TRANSMITTER INTO THE STATION ANTENNA AND MEASURE THE OUTPUT AND REFLECTED POWER. THESE READINGS WILL BE USED AS THE PARAMETERS TO WHICH THE DUPLEXER IS COMPARED.
3. INSTALL THE DUPLEXER INTO THE SYSTEM WITH THE WATTMETER BETWEEN THE TRANSMITTER AND DUPLEXER. CONNECT THE STATION ANTENNA TO THE DUPLEXER ANTENNA TERMINAL. RETUNE THE TRANSMITTER AND READ THE FORWARD AND REFLECTED POWER. FROM THE CHART ON THE BACK OF THIS PAGE, USING THESE POWER READINGS, THE VSWR OF THE DUPLEXER CAN BE FOUND. THE TYPICAL VSWR IS 1.25:1 OR LESS, THE MAXIMUM IS 1.5:1.
4. NEXT, MEASURE THE OUTPUT POWER FROM THE DUPLEXER INTO THE STATION ANTENNA. DIVIDE THIS READING BY THE NET INPUT POWER (NET INPUT POWER = INPUT POWER - REFLECTED POWER FROM #3). GO TO PAGE C1-099 AT THE END OF THIS MANUAL AND LOOK DOWN THE HEADING POWER RATIO, FOR A NUMBER THAT IS CLOSEST TO THE CALCULATED VALUE. THEN LOOK TO THE RIGHT OF THIS NUMBER, UNDER THE DB COLUMN, AND READ THE INSERTION LOSS OF THE DUPLEXER. THIS VALUE SHOULD BE EQUAL TO, OR LESS THAN, THE SPECIFICATION OF THE DUPLEXER.
5. TO CHECK THE RECEIVER INSERTION LOSS, INJECT THE RECEIVER FREQUENCY INTO THE RECEIVER WITH A SIGNAL GENERATOR AND OBTAIN AN UNSATURATED FIRST LIMITER READING, NOTE THE GENERATOR OUTPUT LEVEL. NEXT CONNECT THE RECEIVER TERMINAL OF THE DUPLEXER TO THE RECEIVER AND INJECT THE RECEIVER FREQUENCY INTO THE ANTENNA TERMINAL OF THE DUPLEXER. ADJUST THE GENERATOR FOR THE SAME LIMITER READING AND NOTE THE GENERATOR OUTPUT LEVEL. THE DIFFERENCE BETWEEN THIS READING AND FIRST READING IS THE INSERTION LOSS OF THE DUPLEXER.

SS-080  
 April 1973

SPECIFICATION SHEET

R-312C, R-3A11C  
 MR-336B, MR-3A08B Duplexers

ELECTRICAL SPECIFICATIONS

Frequency Range	
R-312C, MR-336B . . . . .	450-470 MHz
R-3A11C, MR-3A08B . . . . .	406-420 MHz
Frequency Separation . . . . .	5.0 MHz or greater
Isolation* Tx to Rx	
at Tx frequency . . . . .	65 db
at Rx frequency . . . . .	65 db
Insertion Loss	
Tx to antenna . . . . .	1.0 db max., 0.8 typical
Rx to antenna . . . . .	1.0 db max., 0.8 typical
VSWR*, Tx and Rx . . . . .	less than 1.5:1
Impedance . . . . .	50 ohms
Power Rating . . . . .	125 watts
Temperature Range	
R-312C, R-3A11C . . . . .	-40°C to +80°C
MR-336B, MR-3A08B . . . . .	-40°C to +60°C
Connectors	
R-312C, R-3A11C . . . . .	"N" type
MR-336B, MR-3A08B . . . . .	UHF

\* With 50 ohm load on antenna terminal

MECHANICAL SPECIFICATIONS

Physical Size	
R-312C, R-3A11C . . . . .	3 $\frac{1}{2}$ " H x 19" W x 2.0"-4 $\frac{1}{2}$ " D
MR-336B, MR-3A08B . . . . .	2 $\frac{1}{2}$ " H x 9.88" W x 10 $\frac{1}{4}$ " D
Weight	
R-312C, R-3A11C . . . . .	13 lbs net
MR-336B, MR-3A08B . . . . .	12 lbs net

SPECIFICATION SHEET

R-313C, R-301C, R-3A12C

ELECTRICAL SPECIFICATIONS

Frequency Range

R-313C . . . . .	450-470 MHz
R-401C . . . . .	470-512 MHz
R-3A12C . . . . .	406-420 MHz

Isolation\* Tx to Rx

at Tx frequency . . . . .	75 db
at Rx frequency . . . . .	75 db

Insertion Loss

Tx to antenna . . . . .	1.4 db max. 1.2 typical
Rx to antenna . . . . .	1.4 db max. 1.2 typical

VSWR\*, Tx and Rx

Less than 1.5:1

Impedance . . . . .

50 ohms

Temperature Range . . . . .

-40°C to +80°C

Power Rating . . . . .

125 watts

Connectors . . . . .

"N" type

\*With 50 ohm load on antenna terminal

MECHANICAL SPECIFICATIONS

Physical Size . . . . .

3.5" H x 19" W x 2 3/4" D

Weight . . . . .

16 lbs net

July 1973  
 SS-094

SPECIFICATION SHEET

R-314C, R-3A13C

ELECTRICAL SPECIFICATIONS

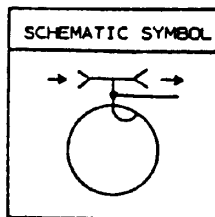
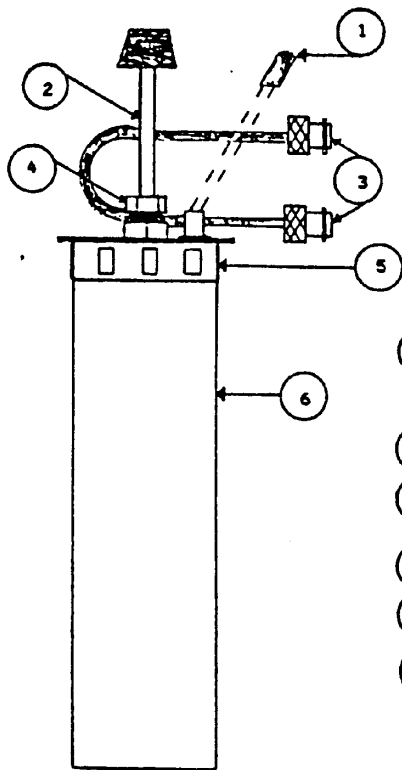
Frequency Range	
R-314C . . . . .	150-470 MHz
R-3A13C . . . . .	406-420 MHz
Isolation* Tx to Rx	
at Tx frequency . . . . .	75 db
at Rx frequency . . . . .	75 db
Insertion Loss	
Tx to antenna . . . . .	0.7 db max.
Rx to antenna . . . . .	0.7 db max.
VSWR*, Tx and Rx . . . . .	Less than 1.5:1
Impedance . . . . .	50 ohms
Temperature Range . . . . .	-40°C to +80°C
Power Rating . . . . .	250 watts
Connectors . . . . .	"N" type

\*With 50 ohm load on antenna terminal

MECHANICAL SPECIFICATIONS

Physical Size . . . . .	3.5" H x 19" W x 2 3/4" D
Weight . . . . .	16 lbs. net

## TWO INCH ROUND, UHF, BANDREJECT CAVITY



- 1 PASSBAND OPTIMIZING STUB, OPEN CIRCUIT COAXIAL STUB (MAY NOT BE PRESENT ON SOME CAVITIES)
- 2 CAVITY TUNING ROD
- 3 CABLES WITH BNC TYPE CONNECTORS ACROSS WHICH THE FILTER RESPONSE IS OBSERVED
- 4 TUNING ROD SHAFT-LOCK NUT
- 5 CLAMP (DO NOT LOOSEN)
- 6 CAVITY BODY

TUNING INFORMATION AND PROCEDURE

THIS IS A BAND REJECT TYPE CAVITY FILTER. IT PROVIDES A SHARP REJECTION NOTCH WHICH IS TUNEABLE ACROSS A SPECIFIED BAND SEGMENT (INDICATED BY MODEL NUMBER). A PASSBAND OCCURS EITHER ABOVE OR BELOW THE NOTCH AND IS PRESET AT THE FACTORY FOR YOUR APPLICATION (REFER TO TEST DATA CARD SUPPLIED WITH YOUR CAVITY).

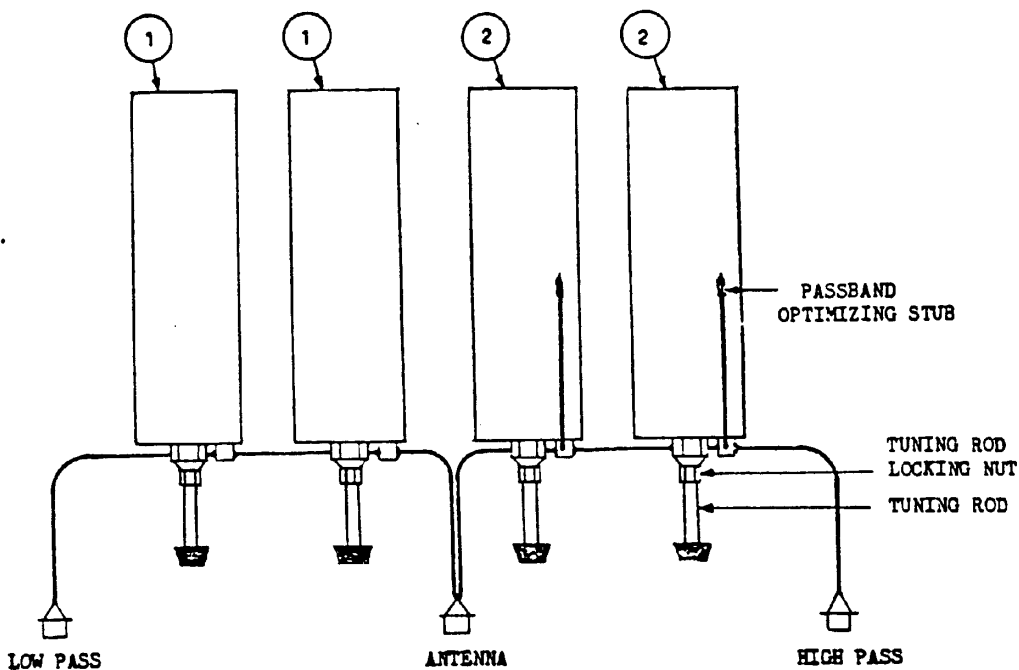
MINIMUM EQUIPMENT REQUIREMENTS FOR TUNING ARE: FM SIGNAL GENERATOR (MEASUREMENTS MODEL 560M OR EQUIVALENT), RECEIVER ON THE FREQUENCY TO BE REJECTED AND A FIRST LIMITER MONITOR METER. SEE CI-096 FOR BASIC TEST CIRCUIT.

## PROCEDURE

SET THE GENERATOR TO THE FREQUENCY TO BE REJECTED. INJECT THIS SIGNAL INTO EITHER CAVITY INPUT CABLE 3 . CONNECT A RECEIVER ON THIS FREQUENCY TO THE OTHER CABLE 3 . ADJUST THE OUTPUT OF THE GENERATOR AS NECESSARY TO OBTAIN A READABLE BUT UNSATURATED LEVEL ON THE FIRST LIMITER MONITOR METER. LOOSEN TUNING ROD LOCKING NUT 4 AND SLIDE THE TUNING ROD 2 TO OBTAIN MAXIMUM ATTENUATION OF THIS SIGNAL AS INDICATED BY THE MONITOR METER. THE SIGNAL GENERATOR OUTPUT WILL HAVE TO BE ADJUSTED AS BEFORE TO MAINTAIN A READABLE LEVEL ON THE MONITOR. WHEN THE SIGNAL CAN NO LONGER BE ATTENUATED, THE CAVITY IS TUNED. RETIGHTEN THE TUNING ROD, LOCKING NUT SECURELY.

1 REJECT HIGH DUPLEX FREQUENCY

2 REJECT LOW DUPLEX FREQUENCY



TUNING PROCEDURE      CAUTION: DO NOT ATTEMPT TO TUNE DUPLEXER UNDER TRANSMITTER POWER

The duplexer can be field returned to the original frequencies or some which are within a 5 to 8 MHz separation and in the same frequency band (450-470 or 470-512). Extreme changes will require internal modifications by the factory, please consult factory in these cases. Tuning the duplexer consists of setting the rejection notches of the four cavities. Minimum equipment requirements for tuning are: FM Signal Generator (measurements model 560M or equivalent), receivers on each of the two duplex frequencies (or one which will tune both) and a first limiter monitor meter. See CI-096 for basic test circuit.

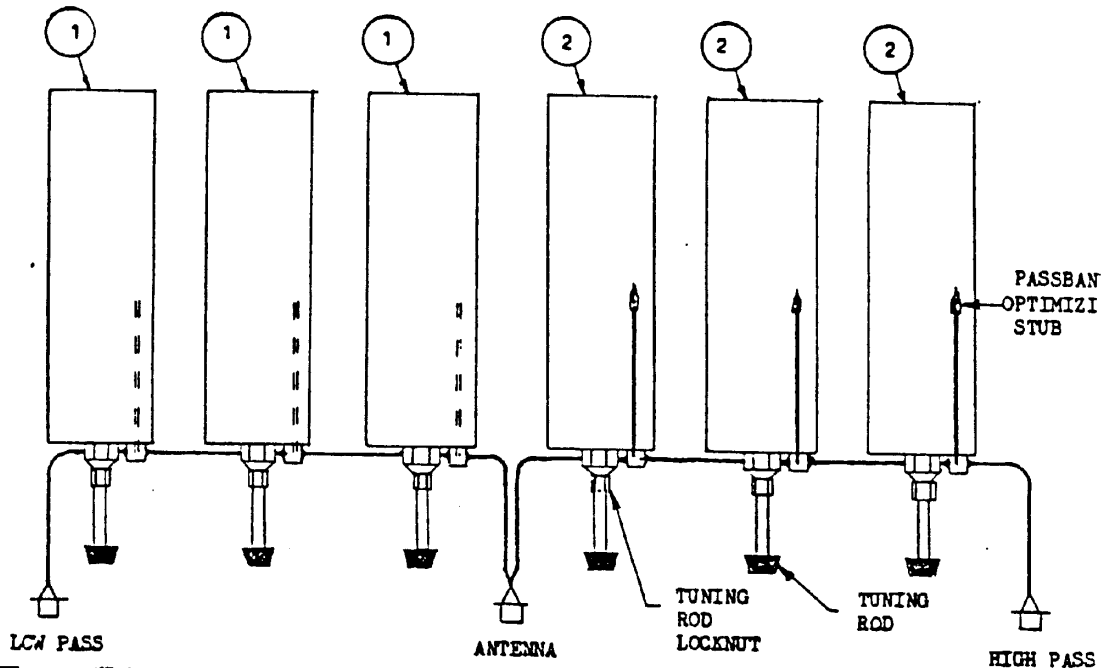
1. Set the generator to the high duplex frequency, inject this into the low frequency input terminal and detect it at the high frequency input terminal with a receiver on this frequency. Tune the rods on the low pass cavities, (reject high), to attenuate this signal. Adjust the output of the signal generator as necessary to maintain a readable but unsaturated level on the first limiter monitor. Peak rods for minimum signal and lock in place. (Do not apply extreme torque to locknuts.)

2. Set the generator to the low duplex frequency, inject this into the high frequency input terminal and detect it at the low frequency input terminal with a receiver on this frequency. Tune the rods on the high pass cavities, (reject low), to attenuate this signal. Then



① REJECT HIGH DUPLEX FREQUENCY

② REJECT LOW DUPLEX FREQUENCY



**TUNING PROCEDURE** CAUTION: DO NOT ATTEMPT TO TUNE DUPLEXER UNDER TRANSMITTER POWER

The duplexer can be field returned to the original frequencies or some which are within a 3 to 5 MHz separation and in the same frequency band (450-470 or 470-512). Extreme changes will require internal modifications by the factory, please consult factory in these cases. Tuning the duplexer consists of setting the rejection notches of the six cavities. Minimum equipment requirements for tuning are: FM Signal Generator (measurements model 560M or Equivalent), receivers on each of the two duplex frequencies (or one which will tune both) and a first limiter monitor meter. See CI-096 for basic test circuit.

1. Set the generator to the high duplex frequency, inject this into the low frequency input terminal and detect it at the high frequency input terminal with a receiver on this frequency. Tune the rods on the low pass cavities, (reject high), to attenuate this signal. Adjust the output of the signal generator as necessary to maintain a readable but unsaturated level on the first limiter monitor. Peak rods for minimum signal and lock in place. (Do not apply extreme torque to locknuts.)

2. Set the generator to the low duplex frequency, inject this into the high frequency input terminal and detect it at the low frequency input terminal with a receiver on this frequency. Tune the rods on the high pass cavities, (reject low), to attenuate this signal. Then proceed as above.

The duplexer is now tuned.

\* ANTENNA MUST BE TERMINATED IN 50 OHMS

# ATTENUATION AND INSERTION LOSS

## FIELD MEASUREMENT TECHNIQUES

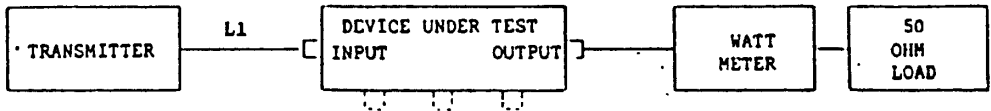
CI-096-1

These instructions are intended to provide reasonably accurate insertion loss and attenuation measurements on filters, duplexers and multicouplers in the field using minimum test equipment.

### INSERTION LOSS MEASUREMENTS

Two methods are presented, the first is used for measuring transmitter insertion loss using the transmitter and a wattmeter. The second method is general and can be used for either transmitter or receiver insertion loss measurements.

**TRANSMITTER INSERTION LOSS MEASUREMENTS** - The VSWR of the wattmeter should be 1.2:1 or less and the use of numerous adaptors in making connections should be avoided because the VSWR of these is often poor and will degrade the measuring system. UHF adaptors and connectors should be avoided when ever possible because their impedance characteristics vary widely with frequency.



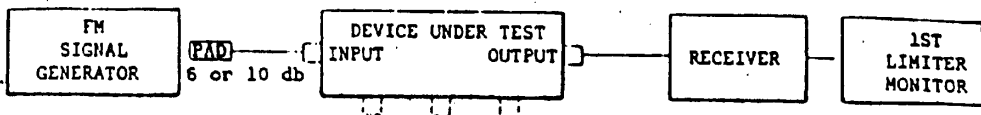
Install the device to be measured in the circuit as shown above, tune the transmitter for maximum power out. If the reflected power is not zero or near zero, then cable L1 should be adjusted to give the highest output power (lowest reflected power) when tuning the transmitter into the device. There will be some VSWR looking into the device and length L1 will determine the reactive component reflected to the transmitter. Because the adjustment range of the transmitter output is limited, it has been found that adjustment of L1 for maximum output can prove advantageous for lowest insertion loss.

An arbitrary length for L1 may be chosen and then varied by the addition of 1/8, 1/4, or 3/8 wavelengths, each time retuning the transmitter. The addition of one of these lengths, or the initial length of L1 will give maximum power out with a minimum of plate current. The trial lengths for polyethylene dielectric (solid) cables can be computed from these formulas.

$$\lambda g/8 = 973/\text{freq. in MHz}, \quad \lambda g/4 = 1946/\text{freq. in MHz}, \quad 3\lambda g/8 = 2919/\text{freq. in MHz}$$

When maximum power output has been obtained through the device, note this power, then disconnect the device from the final length of L1 and connect directly to the wattmeter and load. Retune the transmitter, maintaining the same coupling and note the power output. You can now compute the power ratio, which is equal to power out (with device)/power out (without device). Page CI-099 will give the insertion loss value for the calculated power ratio.

**SUBSTITUTION METHOD FOR INSERTION LOSS MEASUREMENT** - Assemble the test set up as shown on the next page. The remaining terminals need not be terminated if the device under test is a duplexer or multicoupler. Inject the frequency and obtain a reference level on the first limiter monitor, taking care not to saturate the limiter circuit. Note the microvolt signal level and the generator output (dbm). Next, inject the signal directly into the receiver and decrease the signal generator output until the same reference level is obtained. The insertion loss is the difference in dbm as taken from the generator dial or the ratio of microvolts, using the following relationship,



and then referring to the table on CI-099.

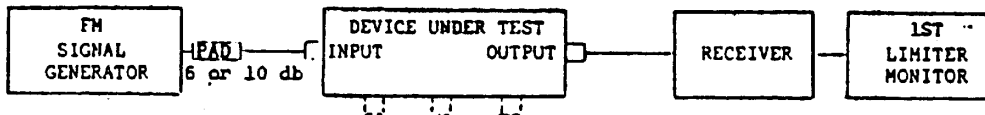
$$\text{Voltage ratio} = \text{microvolts (w/o device)}/\text{microvolts (w/device)}$$

A step attenuator providing small db increments (0.1, 0.2, 0.5, 1.0) can be used to provide more accurate readings. The attenuator should be connected to the generator output. Snap in and leave in about 6 db to pad the generator output. Take the reading with the device in the circuit, then remove the device and connect the two leads together. Snap in attenuation to bring the level down to the same reference level. The insertion loss is the equal to the amount of dbs snapped in (do not count in the value you had for padding purposes).

#### EQUIPMENT NOTES:

1. Quick slip connectors can be made by sawing off the outer barrel of male plugs. They can then be inserted in a variety of female contacts such as "N", "BNC", or "TNC" jack.
2. Use a minimum of adaptors in test cables, especially UHF and conversion types between "N", "UHF", or "BNC". The VSWR and associated phase shift of "UHF" type connectors can cause erroneous readings, especially when measuring low values of insertion loss.
3. FM signal generator may be measurements model 560 M or equivalent. The step attenuator is one providing 0.1 db increments for measurement of low insertion losses using the substitution method. This may be omitted and the attenuator on the signal generator substituted, but with substantial loss of resolution. (Kay model 1/432 C or equivalent).
4. The length between the duplexer and the receiver may have some effect on insertion loss and may be adjusted if desired, but it has been found that the receiver is not as sensitive or as easily disturbed by slight mismatches.

#### ATTENUATION MEASUREMENTS



Insert the two terminals, between which the attenuation is to be measured, into the test circuit above. If the device has more than two terminals, as a duplexer or multi-coupler, terminate all remaining terminals with 50 ohms before making measurements.

Using a signal generator and receiver on the test frequency, set the signal generator drive for a readable but unsaturated level on the 1st limiter monitor. Note a reference level on the first limiter monitor and the dbm level on the signal generator attenuator or the microvolt reading on the generator attenuator. Remove the filter termin-

als and connect leads of the test circuit together. Reduce the output on the signal generator until the reference level on the 1st limiter monitor is obtained. Note the dbm level on the signal generator attenuator. The difference between this and the previous level represents the filter attenuation in db. If the microvolt readings are used, the attenuation can be obtained from the ratio of the two readings, then referring to the chart on CI-099 using the closest tabulated value.

Voltage ratio = microvolts (w/o device)/microvolts (w/device)

Consult the data Sheet or Detailed Tuning Procedure of the particular model under test for typical values of Insertion loss and attenuation.

**PRECAUTIONARY MEASURES FOR MORE RELIABLE MEASUREMENTS** - RF leakage is occasionally a problem when measuring filter attenuations in the area of 60 db or greater. When measuring attenuations over 80 db, RG-58/u cable should not be used because of excessive radiation. RG-8A/u or RG-213/u cable will permit measurements of 100-110 db only if input and output filter cables are not in close proximity. Double shielded cable, as RG-9/u or RG-142/u, is advised for measurements over 80 db. Occasionally, RF leakage occurs because of excessive radiation from the signal source, insufficient shielding of the receiver or a combination of all the above. If the measurements of a filter section indicates a lower level of attenuation than expected, a parallel path of lower attenuation (RF leakage) may be the reason. If this occurs, you will not be able to measure attenuations greater than the leakage path. If leakage is suspected, a simple test can be made as follows: insert the terminals of the filter under test and obtain a reference level on the first limiter monitor, using sufficient generator drive for a readable but unsaturated level. Note the dbm level of drive on the signal generator. Now insert a known level of attenuation in series with the filter section, as a 6 or 10 db pad. It should be necessary to increase the signal generator drive, in dbm, by the amount of attenuation added to obtain the previous reference level on the first limiter monitor. If RF leakage is occurring, the signal generator drive will be practically the same, indicating a path for RF other than thru the filter section. It can be easily shown if the filter section is responsible for the RF leakage. The results of the leakage test should be unaffected by placing the additional attenuation before or after the filter section in the test circuit, allowing for slight variation due to possible VSWR level of the attenuator. The 10 db pad should be left on the generator output at all times since the generator is looking into an unmatched line at this frequency. In actual practice, the cable length connecting the transmitter to the duplexer will affect the total amount of noise suppression, since the transmitter is an unmatched source of receiver noise power on the receiver frequency and is looking into a reflective load. The cable length which gives the greatest mismatch at the receiver frequency will provide the best noise suppression. Likewise, an adverse length can be chosen which will actually reduce the noise suppression by about 6 db less than the value measured, using a padded signal source. Unfortunately, this length is already adjusted for the best transmitter output through the duplexer. Since there are a few other uncontrollable factors affecting noise suppression such as varying frequency separations and internal extension cable lengths in the duplexer, the best solution is to provide an adequate safety margin of 10-15 db above the theoretical value specified by the manufacturer or systems supplier.