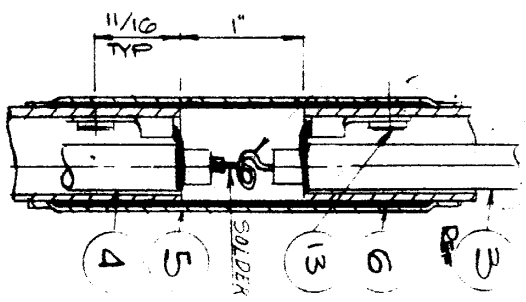


NOTE:
 FORM A SINGLE LOOP
 APPROX. 1/4" DIA. IN
 THE STR. CONDUCTOR
 OF FEED CABLE BEFORE
 SOLDERING TO STUDS

SEE GAP DETAIL



110A-HD

GAP DETAIL

DIPOLE ASSEMBLY

TORONTO • VANCOUVER • MONTREAL • TONAWANDA
 110A SERIES

DIMENSIONS IN INCHES		REVISION	
0-6	.015	.XX	.XX
6-24	.030	.010	.003
24-	.040	.020	.010
		.040	.020
ANGLE: 1/2°		1/4	1/2
		3/8	3/8



ISSUE	DATE	REVISION	APPROVED
13	4-0-3	E.O.# 1291	W.R.
12	2-6-78	ECN 15028	W.R.
11	3-27-75	ECN 13355	W.R.
10	MAN/8	PER ECN 55769	W.R.
9	MAN/8	REVISED PER ECN 5275	W.R.
8	7/81	REVISED PER ECN 5187	W.R.
7	10/78	REVISED PER ECN 5187	W.R.
		REVISED PER ECN 5187	W.R.
		REVISED PER ECN 5187	W.R.

SHIP ASSEMBLY

DRAWN BY W.D. DATE JULY 1978 SHT. 2 OF 2

CHECKED BY [Signature] DATE 10/18/78

APPROVED BY [Signature] DATE 8-09-10

A-451333A

B350300813